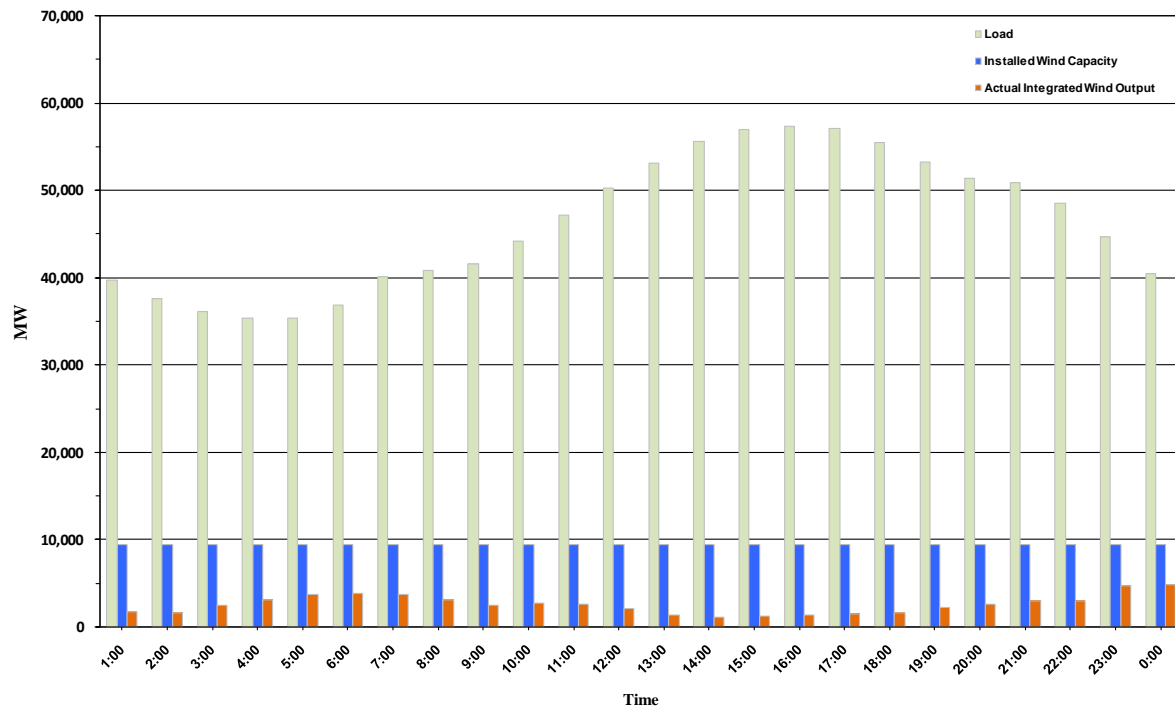




ERCOT Grid Operations Wind Penetration Report: 09/01/10

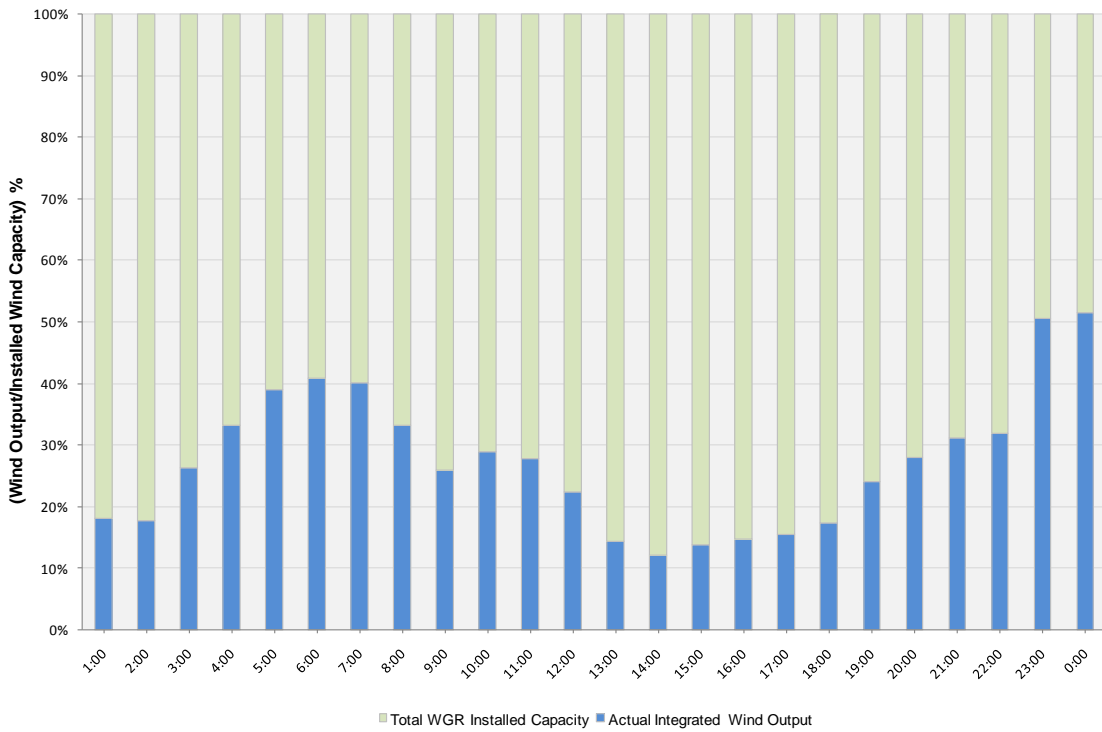
Peak Load	57,356 MW
Load Peak Hour	16
Wind Record 06/12/10	7016 MW
Max Wind value	5099 MW
Wind Peak Hour	22:57:44
Wind Penetration %	11.94

Hourly Average Actual Load vs. Actual Wind Output
09-01-2010

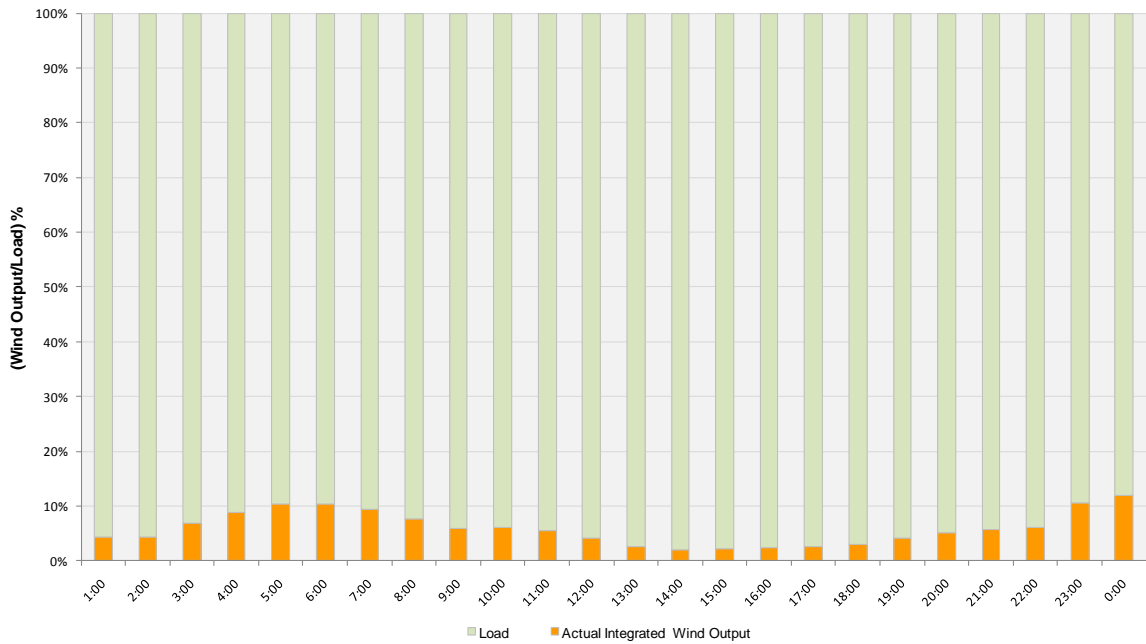




Actual Wind Output as a Percentage of the Total Installed Wind Capacity
09-01-2010



Actual Wind Output as a Percentage of the ERCOT Load
09-01-2010





ERCOT Load vs. Actual Wind Output 08/25/10 - 09/01/10

